



HibouAir – Air Quality Monitor



HibouAir – Outdoor Air Quality Monitoring

HibouAir is an intelligent IoT connected environmental sensor system that easily connects to the Cloud Sensor Analytics platform and helps you monitor in Real-time Particulate matter, VOC, CO₂, NO₂, Humidity, Temperature, Ambient pressure and Ambient Light level. Giving a wide view of the pollution levels.

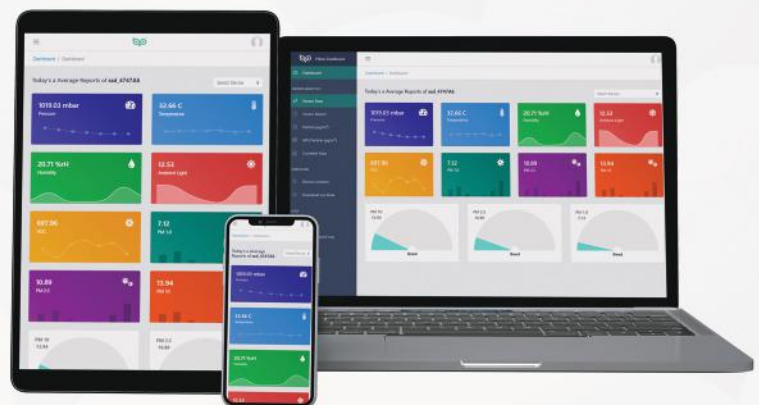
Now including LTE CellularTechnology (LPWAN NB-IOT/LTE-M 3GPP) , WiFi or Bluetooth connectivity.

Comes With **Particle** and **CO₂** sensor



HibouAir App is available for all devices.

** Available on iPhone, iPad and all Android devices.*



The web-based application runs on every web-enabled device. Explore Your Data Visually using various maps, charts and graphs on different devices.



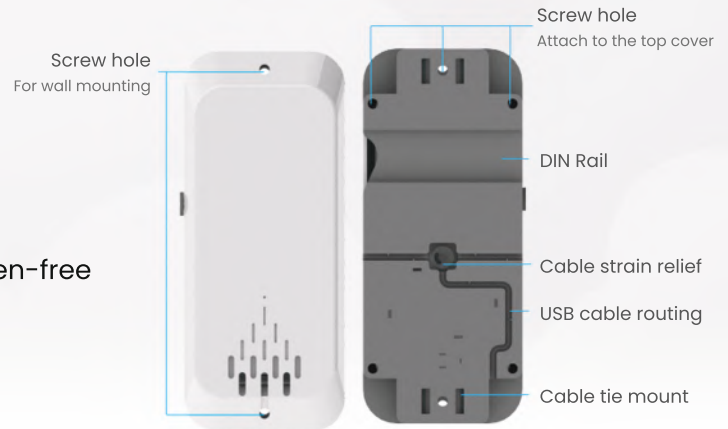
Smart
Sensor
Devices

www.hibouair.com
sales@hibouair.com
+46 703 709 706

Document version : 1.9
Release Date : 27th May 2021

Sensor Specifications

Connectivity	NB-IoT / LTE-M (Optional) 802.11n (2,4 GHz) Wi-Fi Client Bluetooth v.5.0 Peripheral
Security	X.509 certificate, 802.1X authentication
API	Rest-API and mobile App available.
Power	Typ 45mA , peak 400mA (at Wifi transmission). External power adapter.
Sensors	<ul style="list-style-type: none">● Particulate Matter PM10&PM2.5: Resolution 0.3 µg/m3. Max Error ± 15% (@25°C, 50%RH)● Humidity, range: 0...100% r.H. Accuracy: ± 3 % r.H.● Temperature, range: -20...65°C Accuracy: ± 1°C● Pressure, range: 300...1100 hPa ± 0.6 hPa● Ambient light: resolution 100mLux● VOC : Indoor Air Quality Index (IAQ) Output● CO2 : 400ppm to 3000ppm range. 1ppm resolution. Error ± 30ppm● NO2 (Optional): 0 - 5ppm range. Resolution 20ppb , Accuracy 15% of reading
Mechanical	Outdoor installation, IP64
Environmental	Temperature: - 20°C to +55°C Humidity: 100%
Mounting	Wall ,Pole or DIN mount.
Size	205 x 95 x 50 mm
Case Material	ABS
Certification	FCC & CE, RoHS compliant, halogen-free
Colors	Grey, White , Black



How It Works



Install the App

Download and install the HibouAir app from Google Play / App Store.



Connect your device

Connect your device to a power source and get close to the device to setup Bluetooth and Wifi.



Enjoy the features!

The device will accurately inform you about the air quality through app or your cloud dashboard account.

